

# GD&ASSOCIATES

PROPERTIES LISTINGS | UBUD EXCLUSIVES | NATURE'S TIMELESS ELEGANCE



## NATURE'S TIMELESS ELEGANCE

LODTUNDUH, UBUD

PRICE USD	PRICE IDR	OWNERSHIP
USD 2,115,000	IDR 38,000,000,000	Freehold
.....		
BEDS / BATHS	LEVEL	YEAR BUILT
6 / 6.5	2	2012 upgraded in 2025
.....		
LAND SIZE +/-	LIVING SIZE +/-	DESIGN
2,590 sqm 25.90 are	900 sqm 9.00 are	
.....		
CERTIFICATES	ZONING	VIEWS
IMB SHM	Residential	Valley

Positioned above a tranquil river valley just minutes from Central Ubud, this remarkable estate offers a rare combination of scale, privacy, and architectural presence. Set across 2,590 sqm of landscaped grounds with approximately 900 sqm of living space, the property unfolds as a collection of elegant pavilions, tropical gardens, and resort-inspired amenities immersed within one of Bali's most captivating natural settings.

Drawing inspiration from eclectic tropical design, the architecture balances grandeur with warmth through soaring ceilings, exposed timber beams, handcrafted stonework, and expansive openings that frame the surrounding greenery. Originally constructed in 2012, the estate underwent an extensive transformation in 2025, including a complete redesign of the interiors and the full replacement of all mechanical, electrical, and plumbing systems. Six en-suite bedrooms are thoughtfully distributed throughout the estate, including a standalone, self-contained Joglo-inspired guest pavilion that offers exceptional privacy and independence.

At the heart of the property, a striking infinity pool stretches alongside the main residence, overlooking the lush valley below. Landscaped courtyards, a fire pit lounge, elevated garden terraces, and generous indoor-outdoor living spaces create an environment designed equally for entertaining, relaxation, and everyday living. Whether envisioned as a private family compound, luxury retreat, or hospitality investment, this is a property of exceptional character in one of Ubud's most sought-after locations.

*Staff Quarters | Storage Room*

GD&ASSOCIATES by Gilles Demunter®

©2021 PT SURGA TROPIS HIDUP. ALL RIGHTS RESERVED

www.gillesdemunter.com | info@gillesdemunter.com | +(62)819-99-971-591  
GD Headquarters @ Made's Warung Unit #5, Jalan Raya Seminyak,  
Seminyak, Kecamatan Kuta, Kabupaten Badung, Bali 80361, Indonesia.

# GD&ASSOCIATES



## OVERVIEW

REGULAR

OWNERSHIP: FREEHOLD

STATUS: DECENT

LAND SIZE: 2,590 sqm / 25.90 are

LIVING SIZE: 900 sqm / 9.00 are

LEVEL: 2

BED / BATH: 6 / 6.5

VIEWS: VALLEY

FURNISHING: FULLY-FURNISHED

PAYMENT TERM: NO

CERTIFICATION: IMB, SHM

ZONING: RESIDENTIAL

## AMENITIES

✓ STAFF QUARTERS

✓ STORAGE ROOM

## OTHERS

## NEARBY

BALI ZOO

MONKEY FOREST

TITI BATU

YOGA BARN

KEVALA HOME

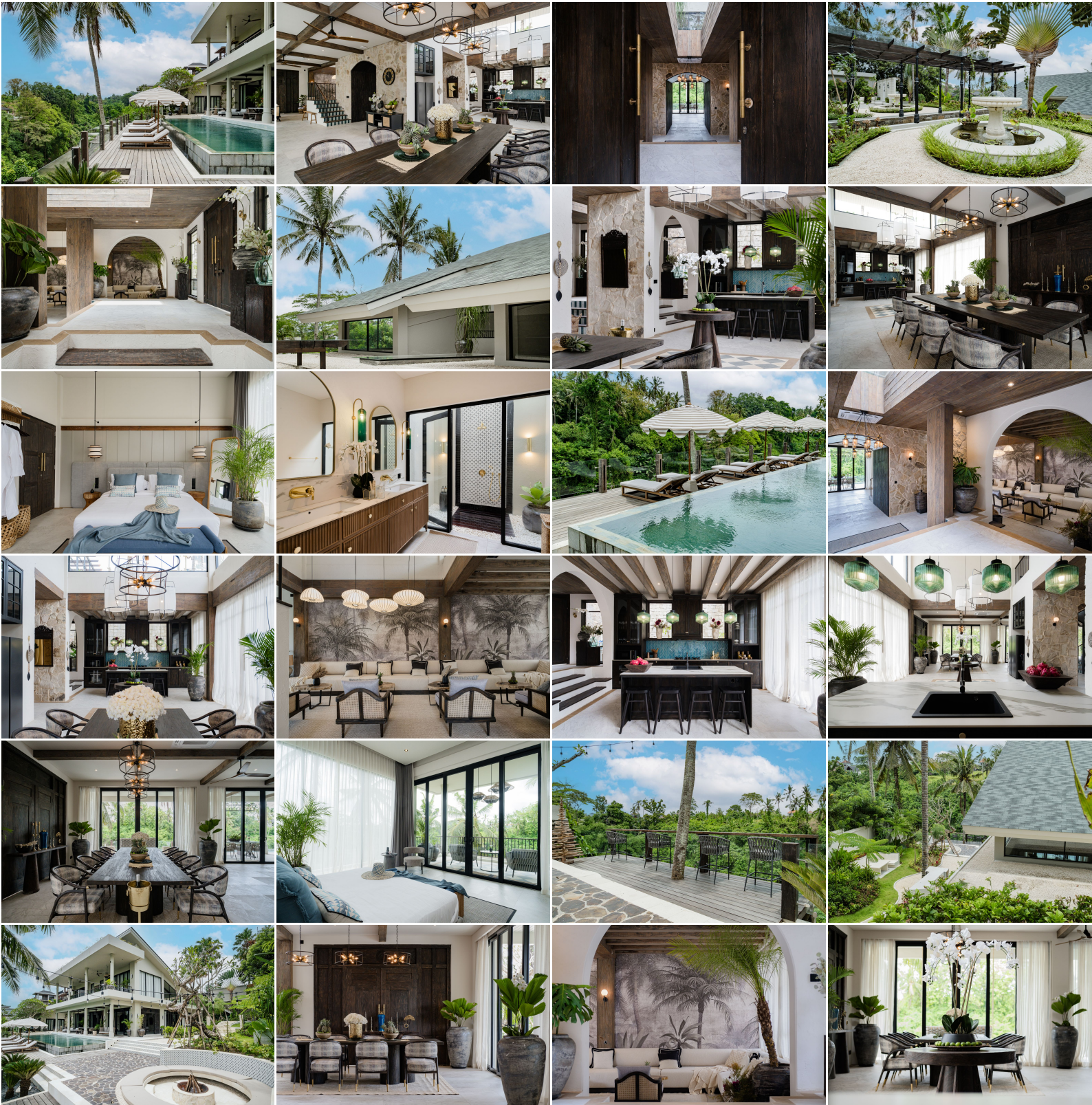
GD&ASSOCIATES by Gilles Demunter®

©2021 PT SURGA TROPIS HIDUP. ALL RIGHTS RESERVED

www.gillesdemunter.com | info@gillesdemunter.com | +(62)819-99-971-591

GD Headquarters @ Made's Warung Unit #5, Jalan Raya Seminyak, Seminyak, Kecamatan Kuta, Kabupaten Badung, Bali 80361, Indonesia.

# GD&ASSOCIATES



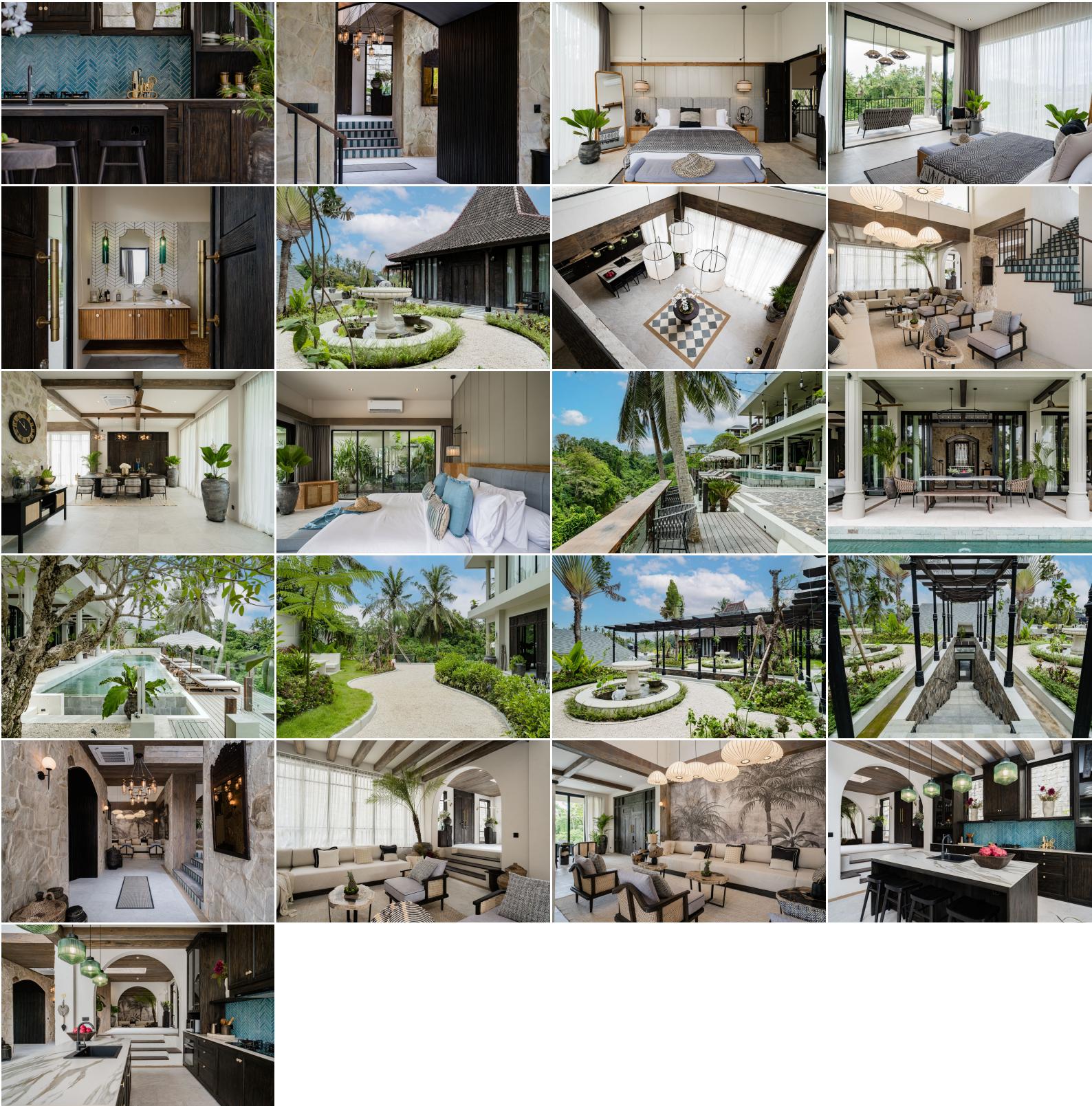
GD&ASSOCIATES *by Gilles Demunter*®

©2021 PT SURGA TROPIS HIDUP. ALL RIGHTS RESERVED

[www.gillesdemunter.com](http://www.gillesdemunter.com) | [info@gillesdemunter.com](mailto:info@gillesdemunter.com) | +(62)819-99-971-591

GD Headquarters @ Made's Warung Unit #5, Jalan Raya Seminyak, Seminyak, Kecamatan Kuta, Kabupaten Badung, Bali 80361, Indonesia.

# GD&ASSOCIATES



GD&ASSOCIATES *by Gilles Demunter*®

©2021 PT SURGA TROPIS HIDUP. ALL RIGHTS RESERVED

[www.gillesdemunter.com](http://www.gillesdemunter.com) | [info@gillesdemunter.com](mailto:info@gillesdemunter.com) | +(62)819-99-971-591

GD Headquarters @ Made's Warung Unit #5, Jalan Raya Seminyak,  
Seminyak, Kecamatan Kuta, Kabupaten Badung, Bali 80361, Indonesia.